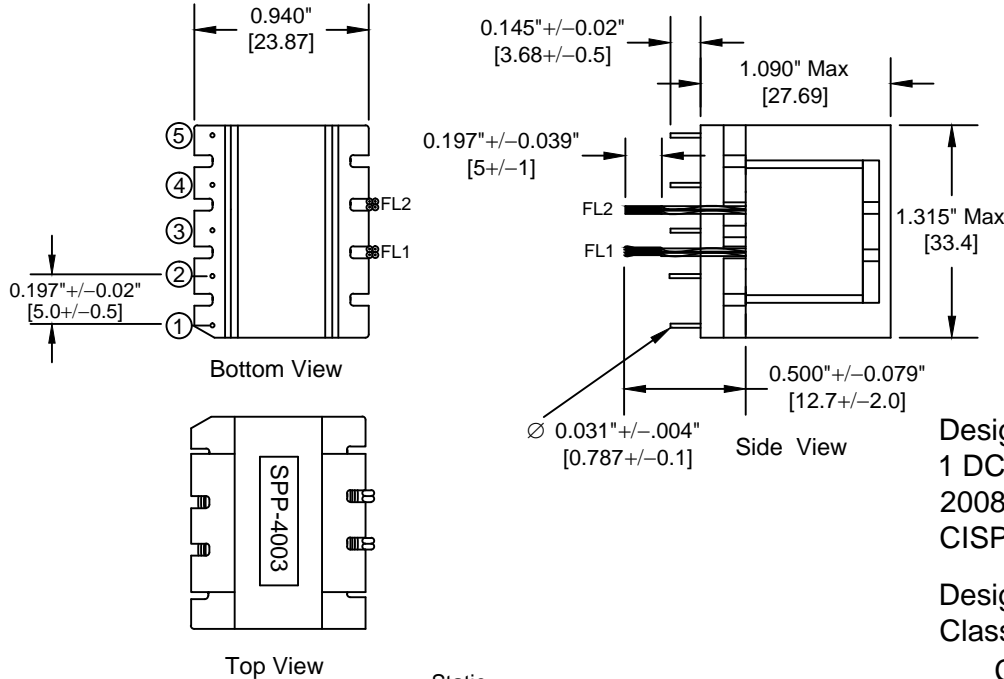


- SWITCHMODE THRU-HOLE TRANSFORMER DESIGNED FOR USE WITH POWER INTEGRATIONS TNY258PN 35W LCD MONITOR APPLICATION. DESIGNED TO COMPLY WITH IEC950, EN60950, UL1950/CSA950, CLASS II REINFORCED INSULATION (TIW), 250V.
- RoHS COMPLIANT.
- DESIGNED FOR EN55022 AND CISPR-22 CLASS B FOR EMC NOISE PERFORMANCE.
- MEETS ENERGY STAR REQUIREMENT OF >85% EFFICIENCY.

REVISIONS			
DATE	REV	DESCRIPTION	APP'VD
12/04/2015	-1	Corrected mm dims, was 3.7mm, 27.7, 0.8	Tjk

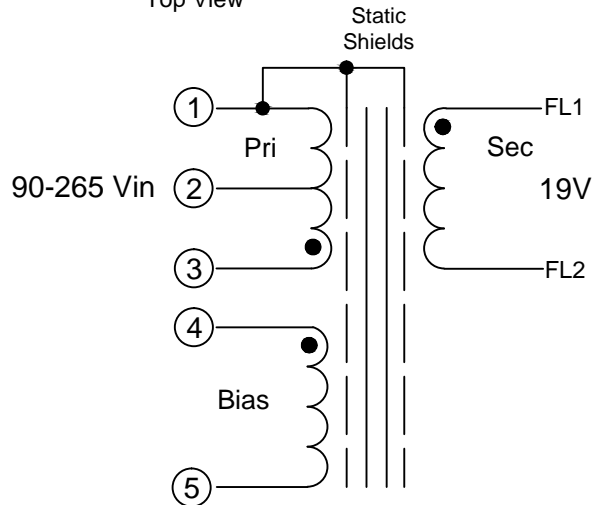


Electrical Specifications:

Dcr Pri 1 - 3: 0.103 Ω Max  
 Bias 4 - 5 : 0.0115 Ω Max  
 Sec FL1 - FL2 : 0.0057 Ω Max  
 Turns Ratio: 1 - 3 : 4 - 5 = 1 : 0.065  
 1 - 3 : FL1 - FL2 = 1 : 0.097  
 Pri Inductance (1 - 3) : 452 μH +/- 5%  
 100KHz, 0.4Vrms  
 Leakage Inductance (1 - 3) with (4 - 5) & (FL1 - FL2) shorted : 5μH Max  
 Resonant Frequency (1 - 3), all other wdgts open : 1MHz Min  
 Dielectric : 3000Vac, 60Hz, 1sec Primary to Secondary

Designed for TOP258EN Chip up to 65.0W; VAc in: 90 - 265Vac, 1 DC output +19V @ 3.42Adc Meets CEC 2008 / Energy Star 2008 Requirement of >85% efficiency, EN55022B and CISPR-22B for EMC noise performance.

Designed to comply with IEC950, EN60950, UL1950/CSA950 Class II Reinforced Insulation (Triple insulated wire)  
 Comply with the requirements of EU RoHS Directive



All dimensions are reference unless otherwise specified. mm = [ ]

		CUSTOM ENGINEERED MAGNETIC COMPONENTS Johnsburg, Illinois 3521 N. CHAPEL HILL RD. / JOHNSBURG, ILLINOIS 60051	
		SCALE: None	APPROVED BY: <i>Gary Garcia</i>
DATE: 06/08/09		REVISED:	
Top258EN 65W Transformer			
65 W Note Book Adapter			DRAWING NUMBER SPP-4003-1